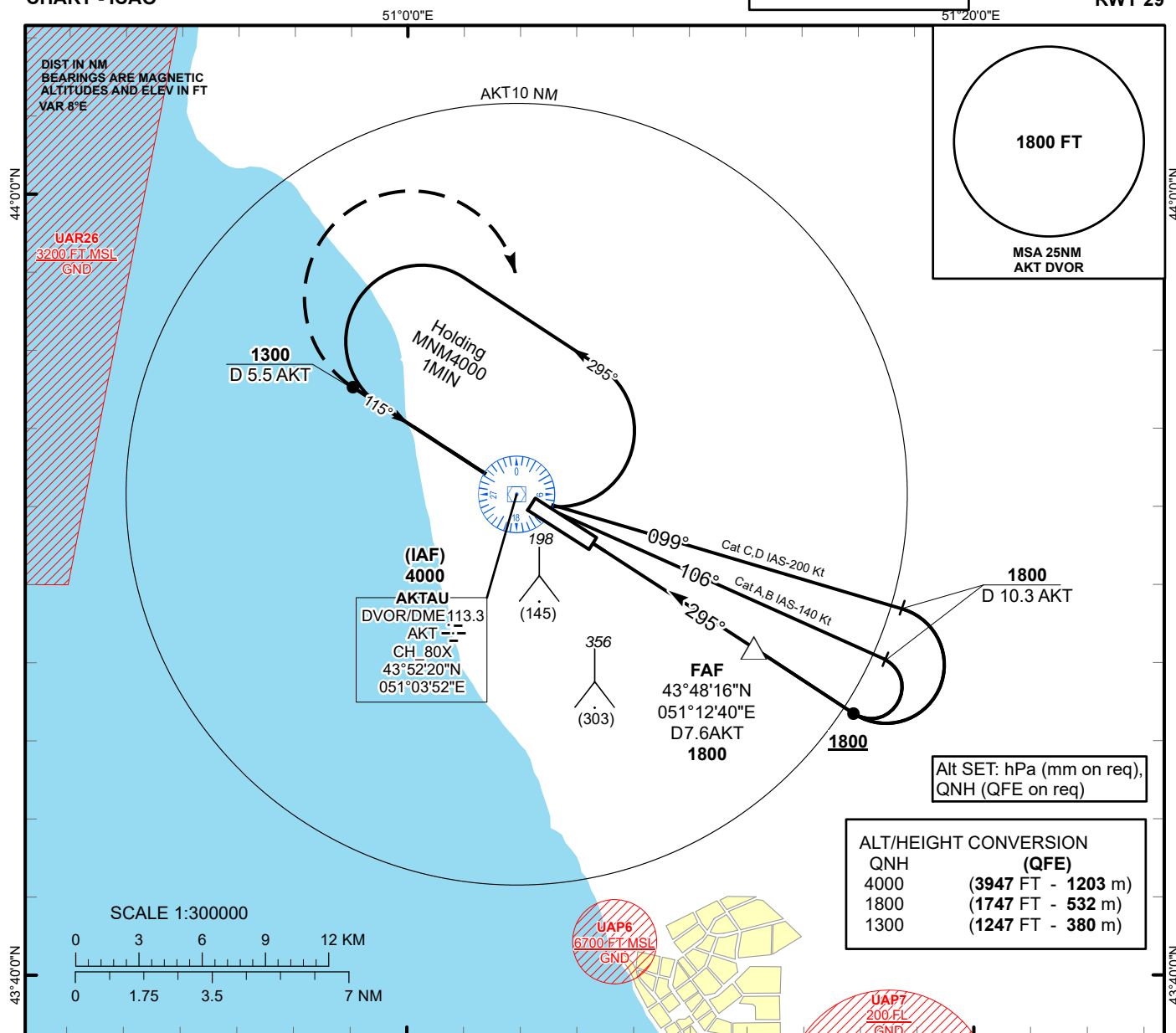
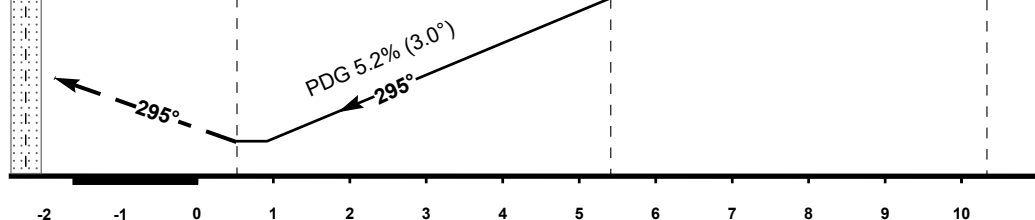


INSTRUMENT
APPROACH
CHART - ICAOAERODROME ELEV **75 FT**
HEIGHTS RELATED TO
THR RWY 29 - ELEV **53 FT**AKTAU TOWER 120.70
AKTAU ATIS (EN) 130.1
AKTAU ATIS (RU) 126.2AKTAU
VOR/DME Z
RWY 29

MISSED APPROACH

Climb on track 295° to 1300 or above
outbound to 5.5 AKT.
Turn RIGHT to AKT.
Climb initially to 1800, then as directed.
RADIO FAILURE: In the case
of RCF climb to 4000 to AKT and
join to holding pattern.
Missed approach turn speed limited
to 250 Kt IAS maximum.

IAF
4000DVOR/DME
AKTMAPt
D 2.7 AKTFAF
D 7.6 AKTTRANSITION ALT
10000ELEV 53
THR RWY 29

Aircraft Category		A	B	C	D	DIST to THR	NM	1	2	3	4	5.4	
Straight-in Approach OCA/H						DME AKT	NM	3.2	4.2	5.2	6.2	7.6	
	VOR/DME	360(310)	360(310)	360(310)	360(310)	ALTITUDE	FT	420	739	1057	1376	1800	
						HEIGHT	FT	367	686	1004	1323	1747	
Aerodrome Operating Minima MDH ft x RVR(CMV)	VOR/DME												
						GS	Kt	80	100	120	140	160	180
						Desc.Rate (5.2%)	ft/min	420	530	630	740	840	950
						FAF-MAPt (4.9 NM)	min:sec	3:41	2:56	2:27	2:06	1:50	1:38

Change: Edit.

AKTAU
VOR/DME Z

AERONAUTICAL DATA TABULATION

VOR/DME approach to RWY29 from AKT DVOR/DME	
Fix/point	Coordinates
AKT DVOR/DME (IAF)	43° 52' 20.3"N 051° 03' 51.9"E
(FAF) D7.6 AKT	43° 48' 15.6"N 051° 12' 39.5"E
THR RWY 29	43° 51' 09.72"N 051° 06' 24.49"E
Final approach descent angle is 3°	